

Redistribution of the State's Electoral Districts

June 2026



Appendix 4

Part 1 (regional maps)

Appendix 4 - Regional and district maps

Guide to maps and boundary descriptions

This appendix includes maps for each of Queensland's 93 electoral districts, displaying the final boundaries for this redistribution.

Boundary descriptions

Each map displays the final boundaries as a maroon line on the map for the relevant district, accompanied by written descriptions of the boundaries. Boundaries may follow features displayed on the maps (such as local government boundaries, localities, major roads and rivers), and additional written descriptors ('callout' labels) are used to identify the location of the boundaries where those features are unclear on the map.

Callout labels may be added in instances where insufficient space exists to label a feature directly on the map (for example, if a road is too short), or where the boundary is aligned to a feature not displayed on the map (for example, the boundary of a property or lot).

Individual copies of these maps will be available for download from the Commission's website (redistribution.ecq.qld.gov.au) and, in the future, from the Electoral Commission of Queensland website (ecq.qld.gov.au).

Interactive map

The final boundaries can be viewed in further detail on the interactive map published on the Commission's website. The interactive map provides the ability to display and compare the existing and new State electoral boundaries, and view additional related spatial information including local government, locality and Australian Bureau of Statistics (ABS) SA1 (Statistical Area Level 1) boundaries. A guide to using the interactive map is included within the *Submission and publication guidelines* (https://redistribution.ecq.qld.gov.au/_data/assets/pdf_file/0020/91910/QRC-Submission-guidelines_v3.pdf) for the redistribution.

Spatial files (geoJSON format) and CSV (comma separated value) data files containing enrolment data for each electoral district can also be downloaded from the Commission's website. Geographical Information Systems (GIS) software is required to view the geoJSON data sets.

Data alignment

The spatial data sets used for these maps are provided through the Department of Natural Resources and Mines, Manufacturing, Regional and Rural Development. As spatial data sets and administrative boundaries are maintained by different entities, spatial layers may not align in some cases.

The boundaries have been developed primarily by using mesh blocks defined by the Australian Bureau of Statistics (ABS) through the Australian Statistical Geography Standard (ASGS) Edition 3. Mesh blocks are the smallest geographic areas defined by the ABS and form the building blocks for the larger regions. Mesh blocks have defined boundaries and can be combined together to accurately approximate other geographies such as Statistical Area Level 1 (SA1) geographies defined by the ABS.

In some instances, for example where an SA1 boundary was not aligned to an identifiable feature, the SA1 was split to form a more meaningful electoral boundary. In addition, minor adjustments were undertaken in some instances to align SA1 geographies to the intended electoral boundary features.

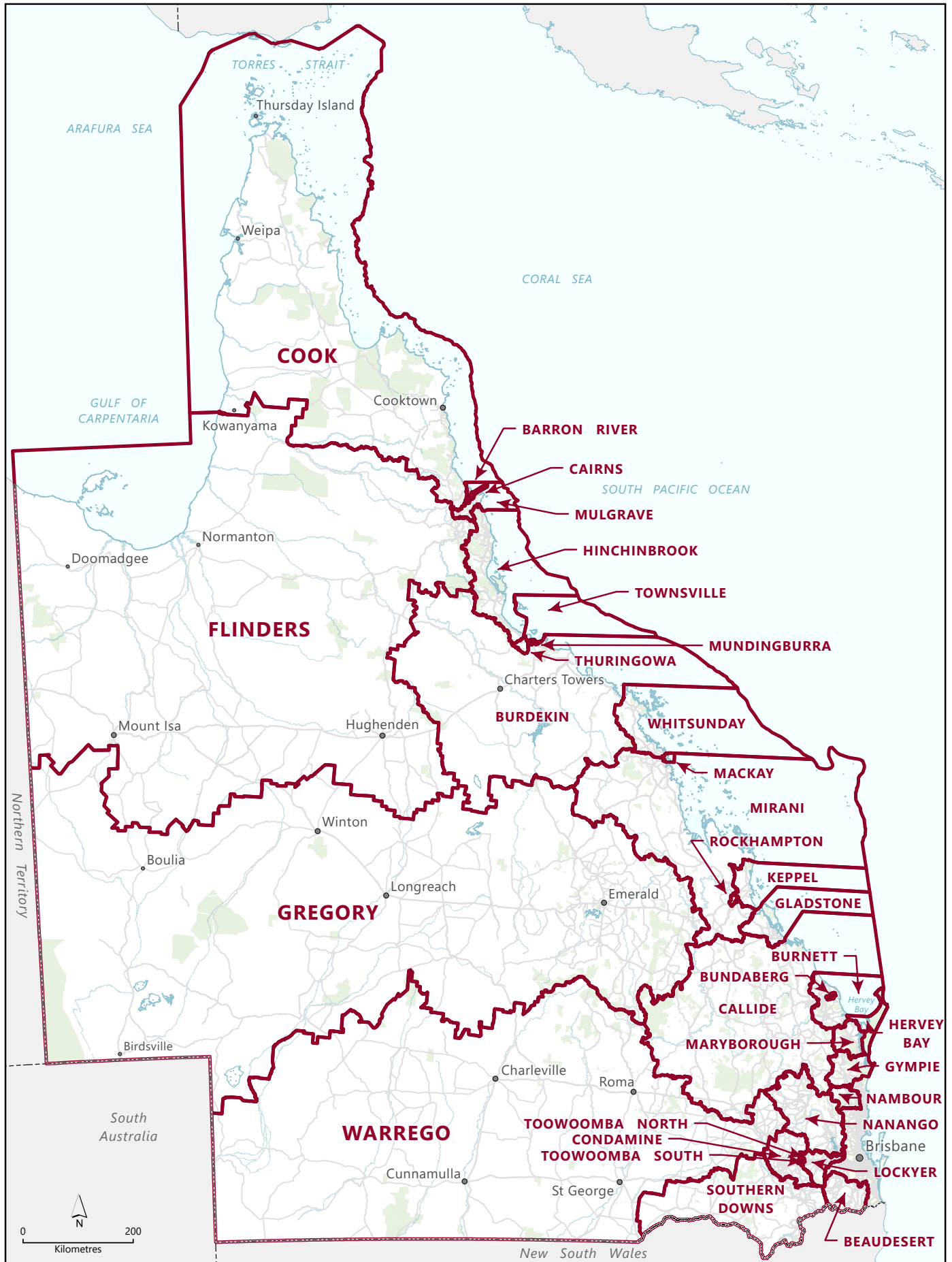
The enrolment numbers stated throughout this report reflect the final alignment of the district boundaries as detailed in this report and the Commission's proposed redistribution published on 10 March 2026.

▲ [Appendix 4 – Part 2 \(maps A-K\)](#)

▲ [Appendix 4 – Part 3 \(maps L-W\)](#)

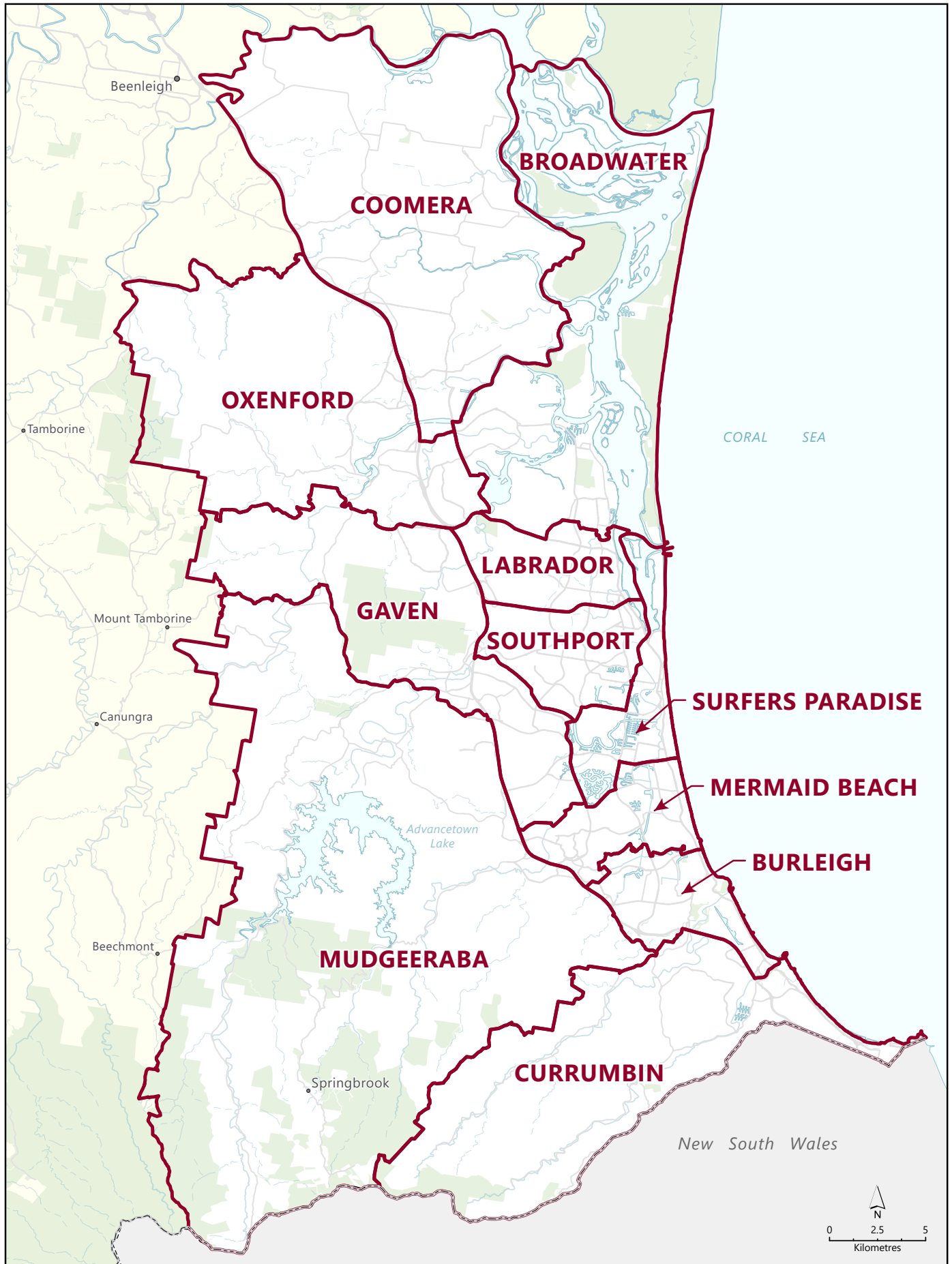
▲ [Redistribution of the State's Electoral Districts report](#)

QUEENSLAND ELECTORAL BOUNDARIES 2026



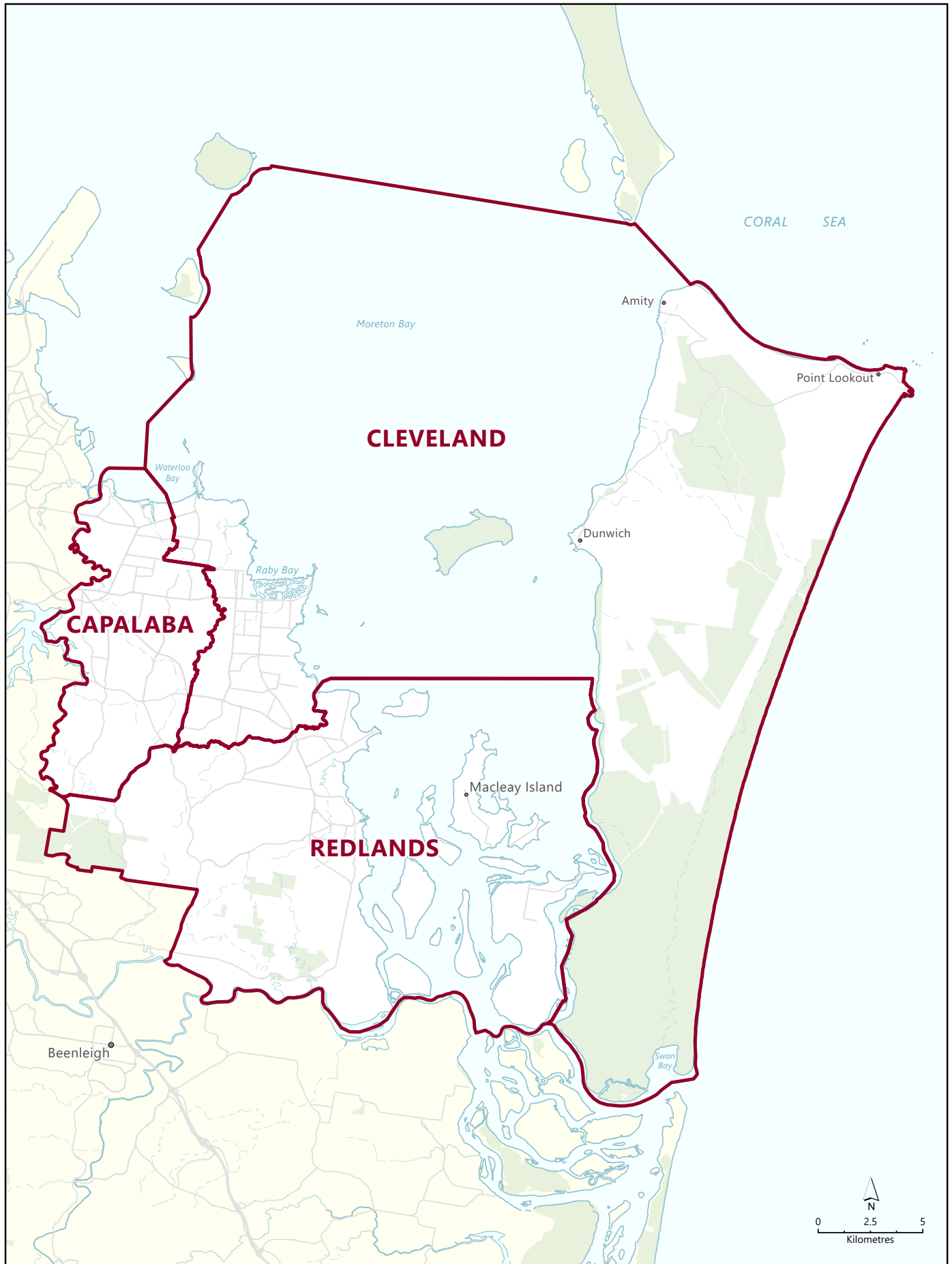
© Electoral Commission of Queensland, 2026. © State of Queensland, 2026

GOLD COAST REGION



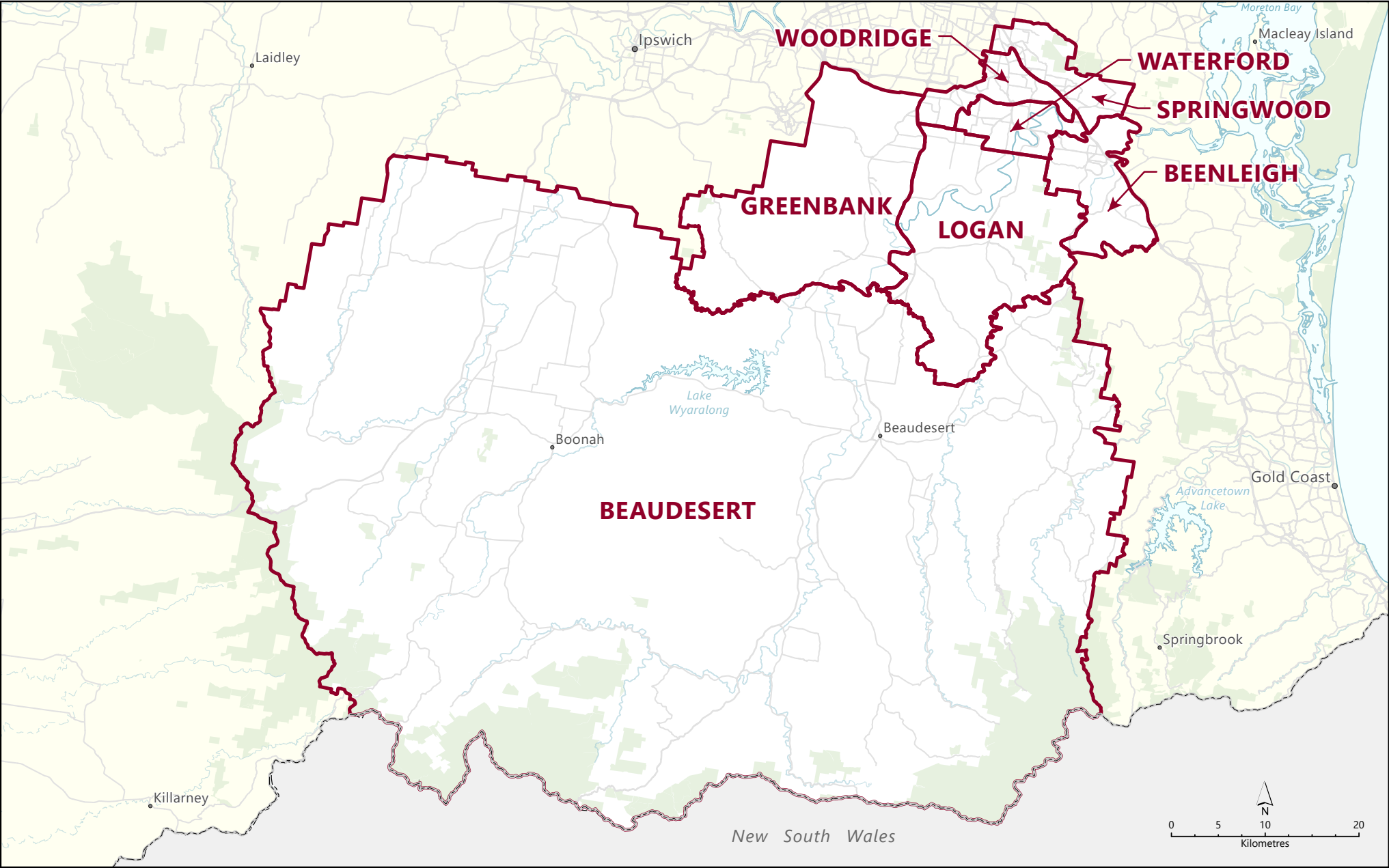
© Electoral Commission of Queensland, 2026. © State of Queensland, 2026

REDLANDS REGION



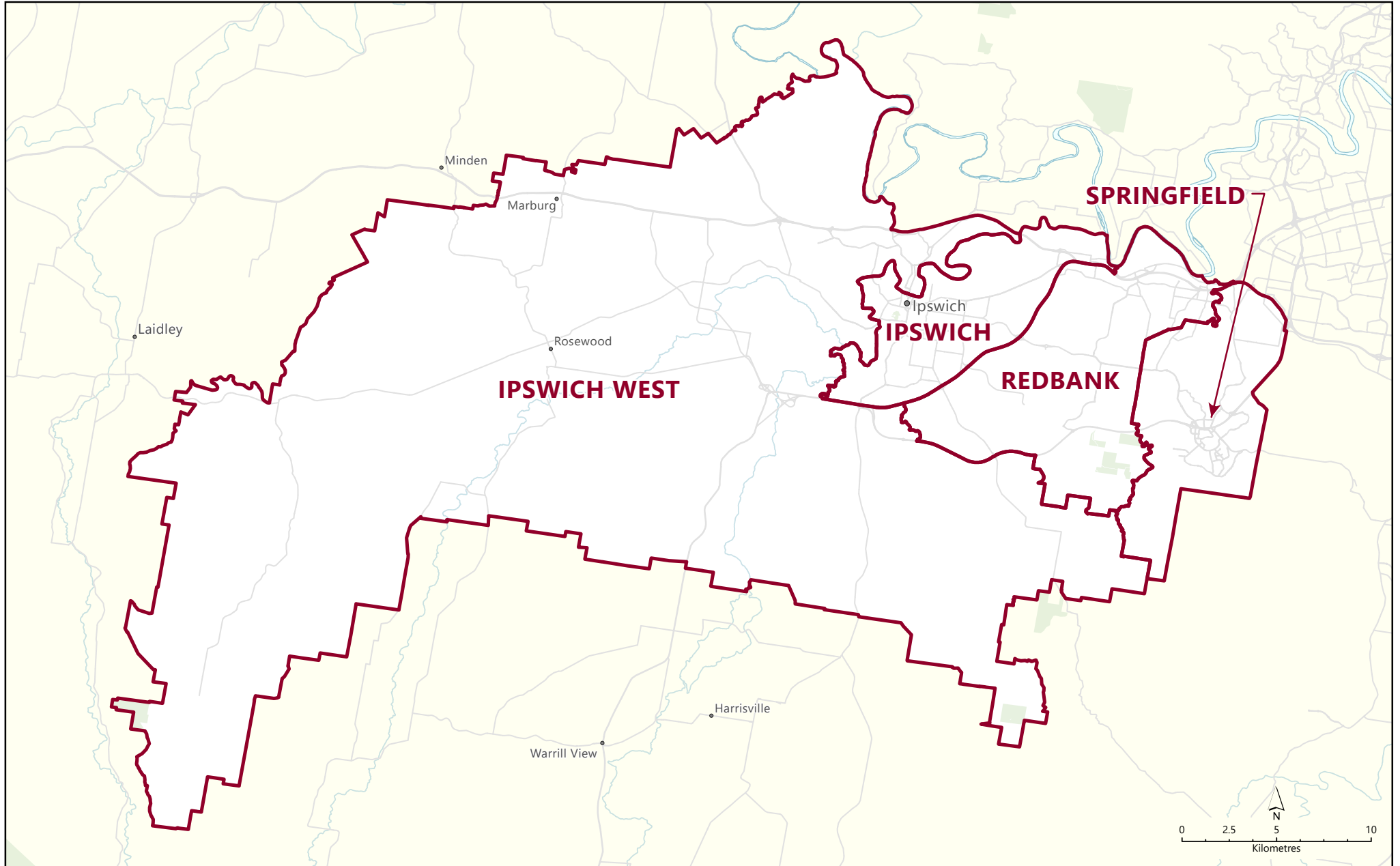
© Electoral Commission of Queensland, 2026. © State of Queensland, 2026

LOGAN REGION



© Electoral Commission of Queensland, 2026. © State of Queensland, 2026

IPSWICH REGION



© Electoral Commission of Queensland, 2026. © State of Queensland, 2026

BRISBANE SOUTH REGION



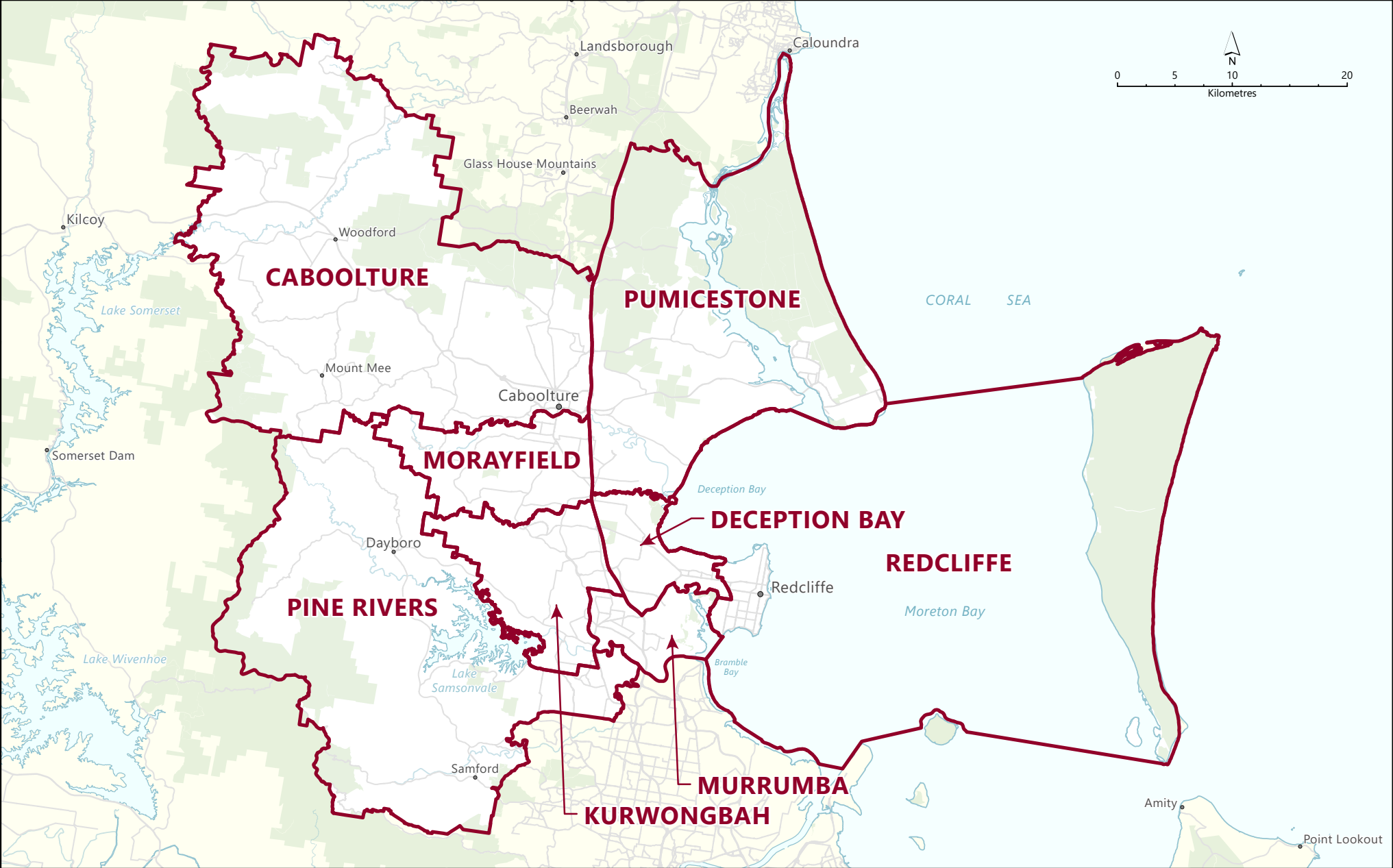
© Electoral Commission of Queensland, 2026. © State of Queensland, 2026

BRISBANE NORTH REGION



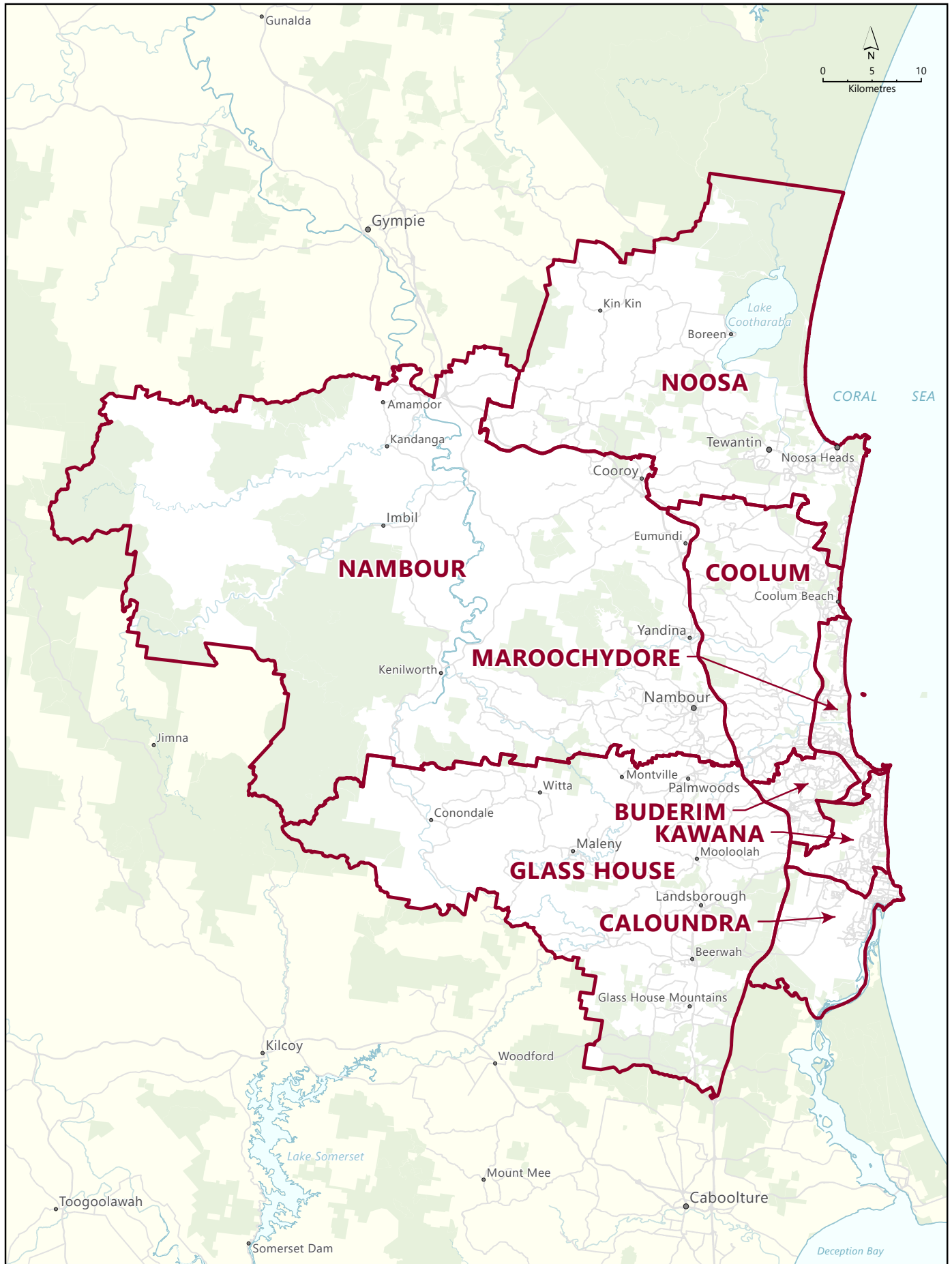
© Electoral Commission of Queensland, 2026. © State of Queensland, 2026

MORETON BAY REGION



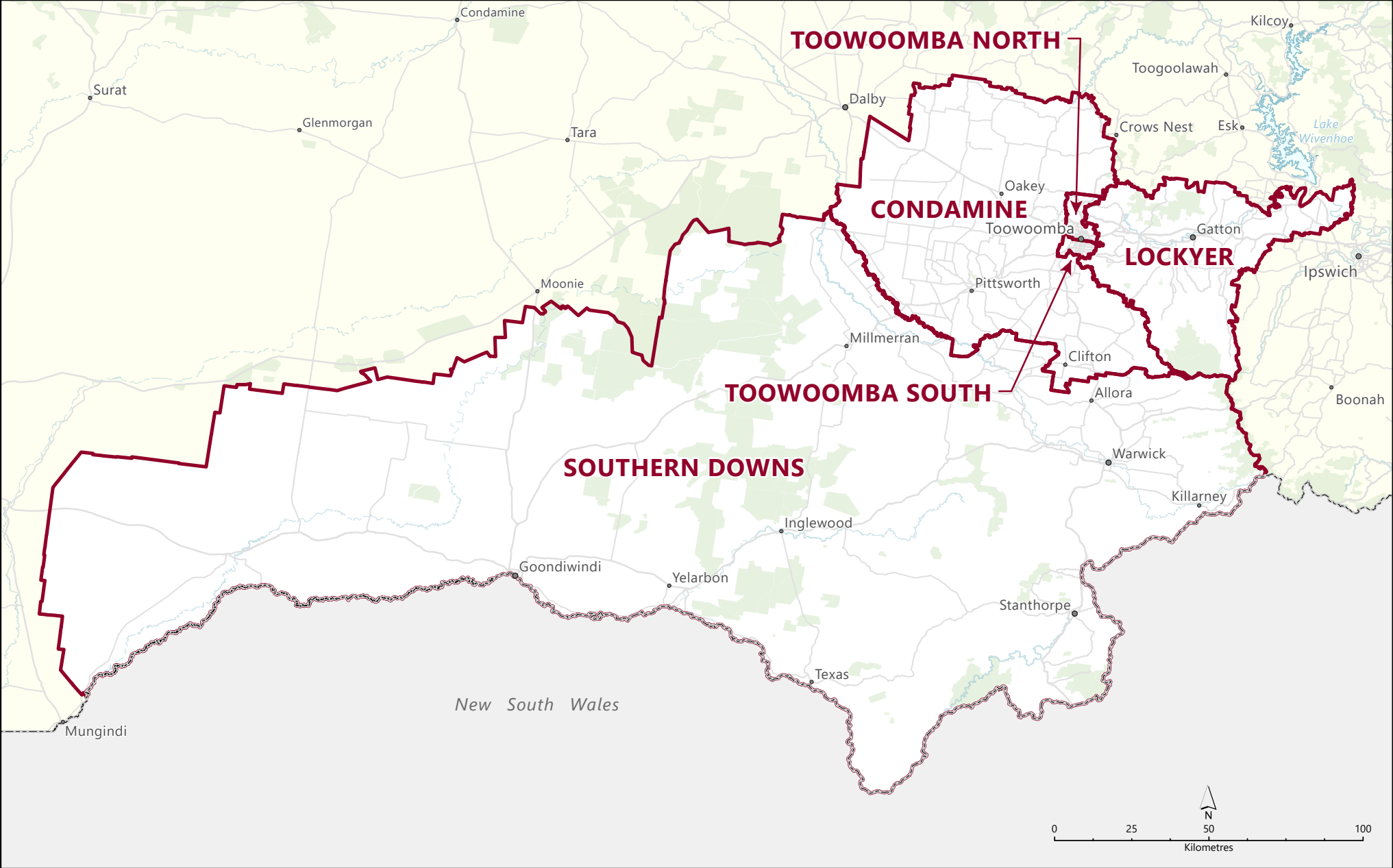
© Electoral Commission of Queensland, 2026. © State of Queensland, 2026

SUNSHINE COAST REGION



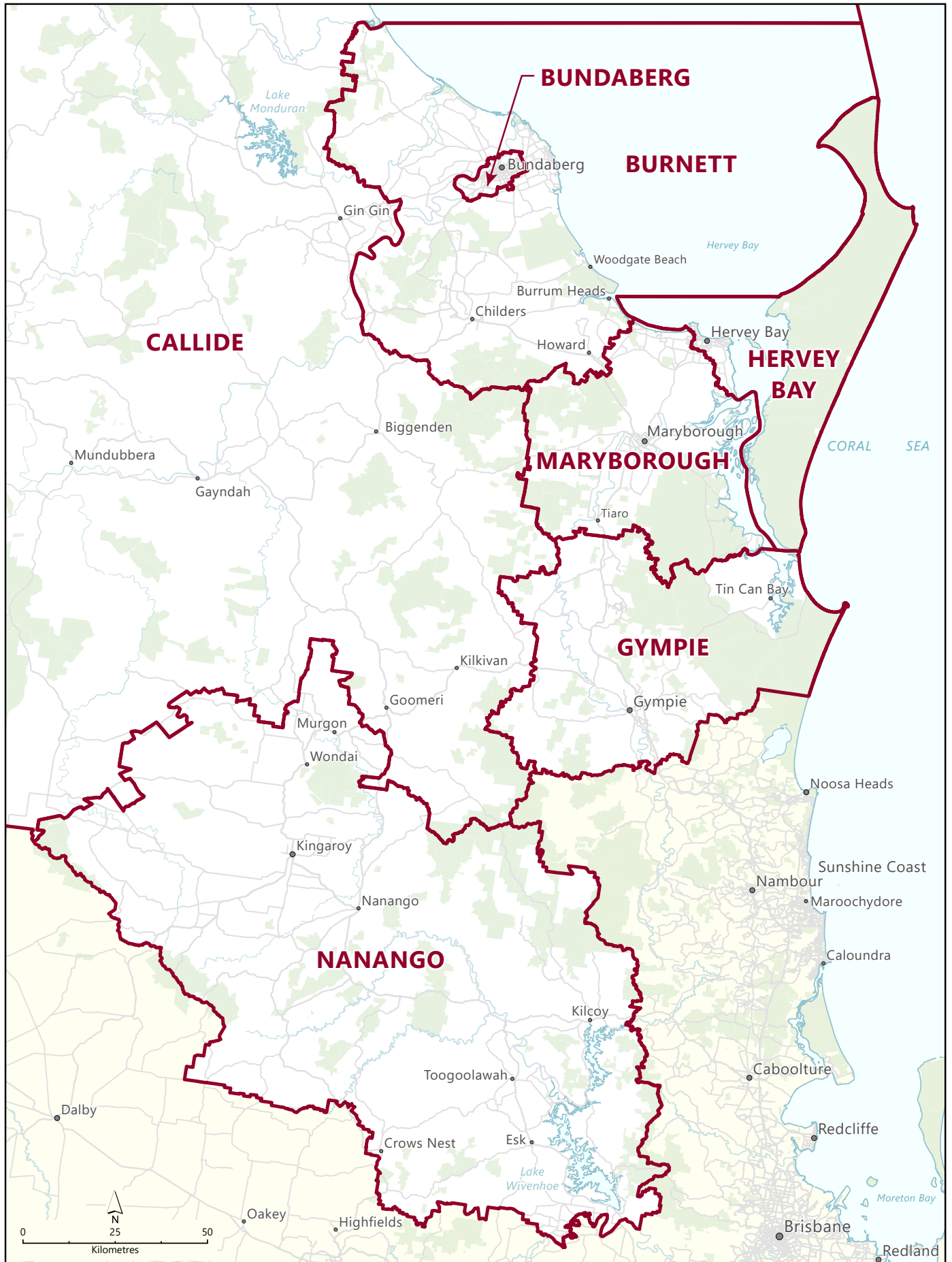
© Electoral Commission of Queensland, 2026. © State of Queensland, 2026

SOUTHERN QUEENSLAND REGION



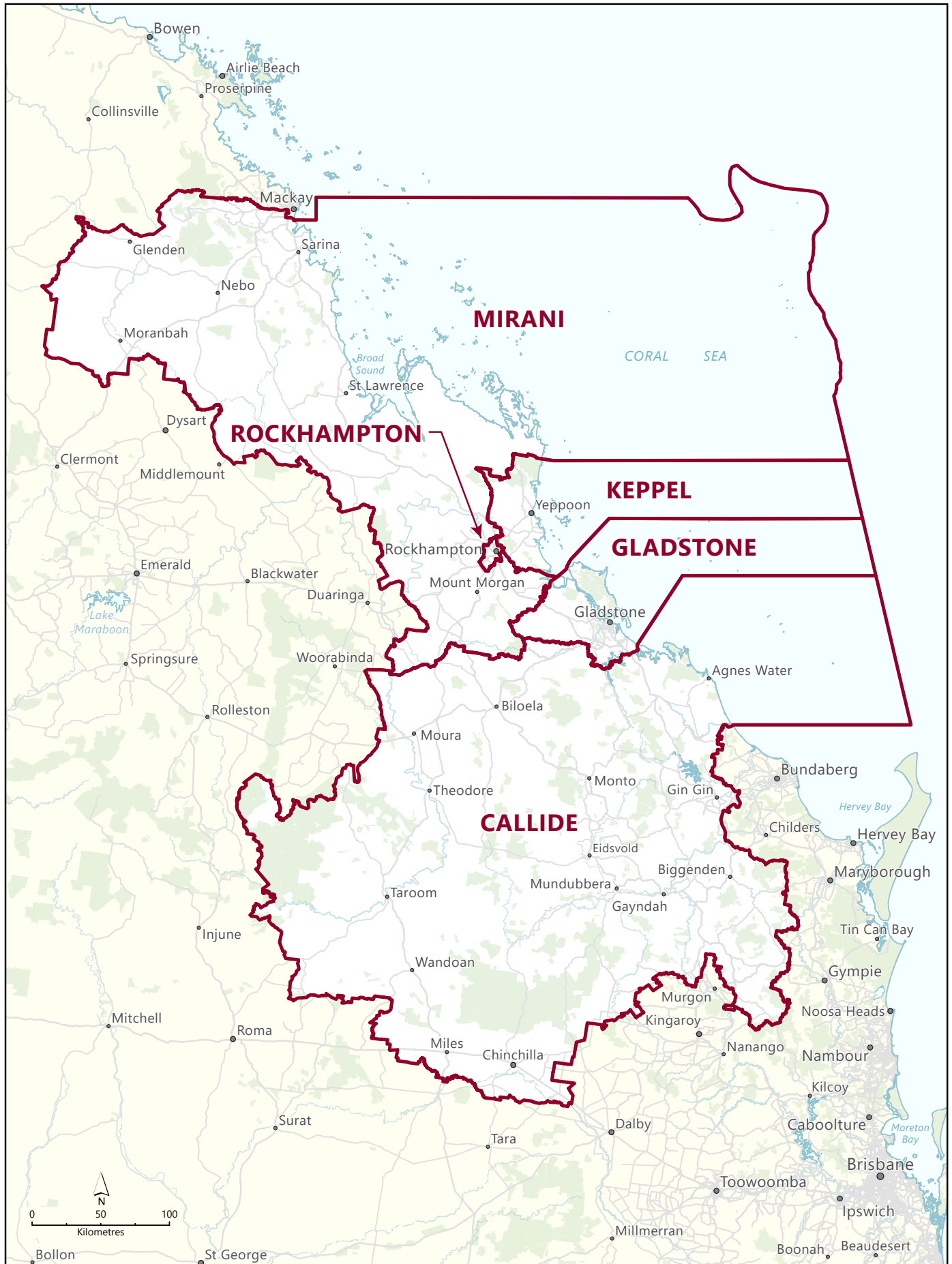
© Electoral Commission of Queensland, 2026. © State of Queensland, 2026

WIDE BAY AND BURNETT REGION



© Electoral Commission of Queensland, 2026. © State of Queensland, 2026

CENTRAL QUEENSLAND REGION



© Electoral Commission of Queensland, 2026. © State of Queensland, 2026

NORTHERN QUEENSLAND REGION



© Electoral Commission of Queensland, 2026. © State of Queensland, 2026

